

25.6 MBPS ATM FILTERS MODULES & SMD ISOLATION TRANSFORMERS

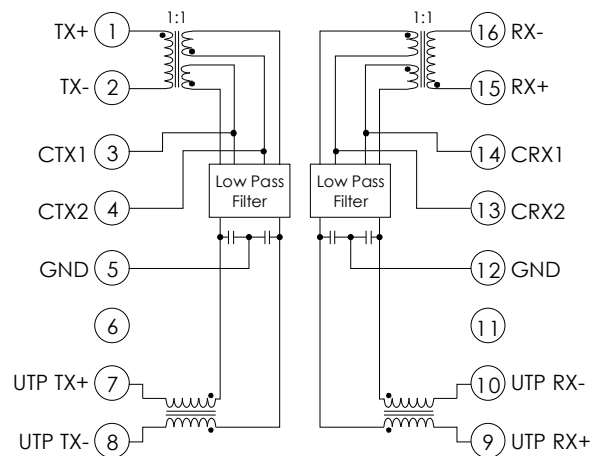
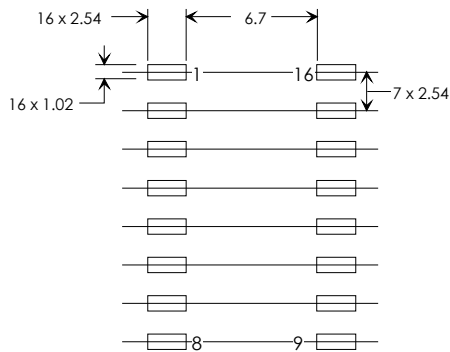
- * Designed to meet ATM 25.6 PHY specifications.
- * Designed to Support the SEEQ 93C95 PHY Interface.
- * Provides the Cable Isolation & Impedance Matching for 100 Ohm UTP Applications
- * Surface Mount Package.

PART NUMBER	Return Loss (dB Min)		Comm-Comm Rejection (dB Min)			Insertion Loss (dB)					Cross Talk (dB Min)			HI-POT (Vrms Min)
	1-17MHz	17-25MHz	5MHz	20MHz	200MHz	12KHz MAX	4MHz MAX	16MHz MAX	24MHz MAX	36MHz MIN	5MHz	16MHz	24MHz	
PM-7583	-16	-9	-20	-25	-20	-3.0	-0.6	-1.0	-1.8	-10	-50	-50	-46	600

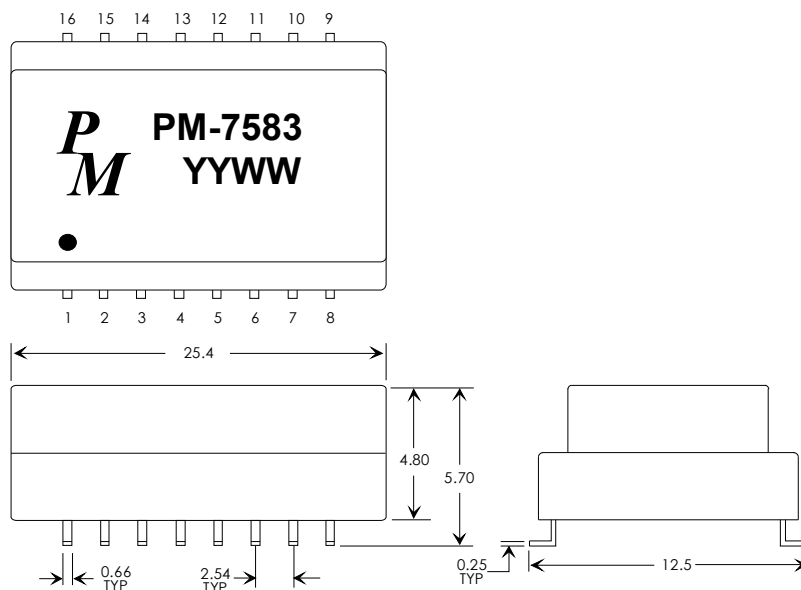
PM-7583 MECHANICAL

PM-7583 SCHEMATIC

RECOMMENDED P.C.B. LAYOUT Dimensions in mm



PHYSICAL DIMENSIONS IN mm



PM-7583
100BASE-TX MAGNETICS

Specifications subject to change without notice.

pm-758x 7/98

25.6 MBPS ATM FILTERS MODULES & SMD ISOLATION TRANSFORMERS

- * Designed to meet ATM 25.6 PHY specifications.
- * Designed to Support the SEEQ 93C95 PHY Interface.
- * Provides the Cable Isolation & Impedance Matching for 100 Ohm UTP Applications
- * Surface Mount Package.

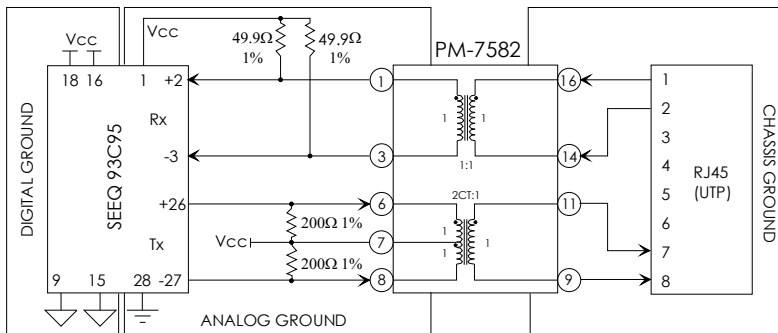
ELECTRICAL SPECIFICATIONS AT 25°C - OPERATING TEMPERATURE RANGE 0°C TO 70°C

PART NUMBER	TRANSMIT TURNS RATIO (1-3 : 16-14)	RECEIVE TURNS RATIO (11-9 : 6-8)	PRIMARY OCL (μH Min.)	Interwinding Capacitance Cw/w (pF Max.)	Leakage Inductance Llk (μH Max.)	DC Resistance DCR (Ohms Max.)	HI-POT (Vrms Min)
PM-7582	1 : 1	1 : 2CT	3000	55	1.6	1.30	1500

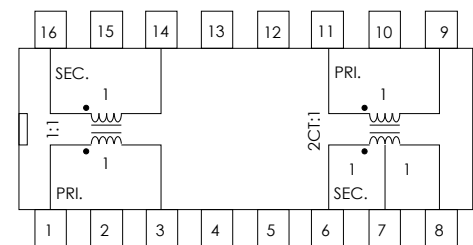
APPLICATIONS

SCHEMATIC

TYPICAL APPLICATION CIRCUIT

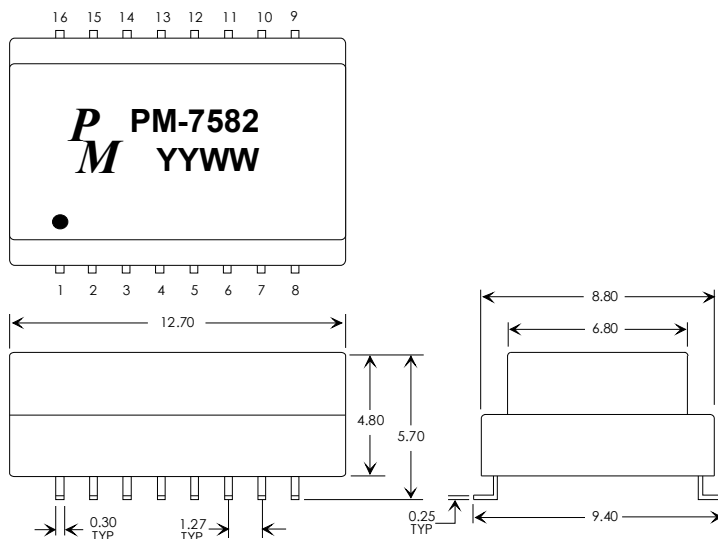


SCHEMATIC DIAGRAM

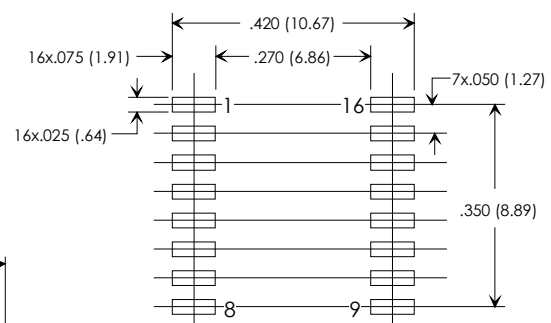


DIMENSIONS

PHYSICAL DIMENSIONS IN INCHES (mm)



RECOMMENDED P.C.B. LAYOUT Dimensions in inches (mm)



Specifications subject to change without notice.

pm-758x 7/98